

Stil LID951

Inward opening door, 2+1 glazed

Product Facts

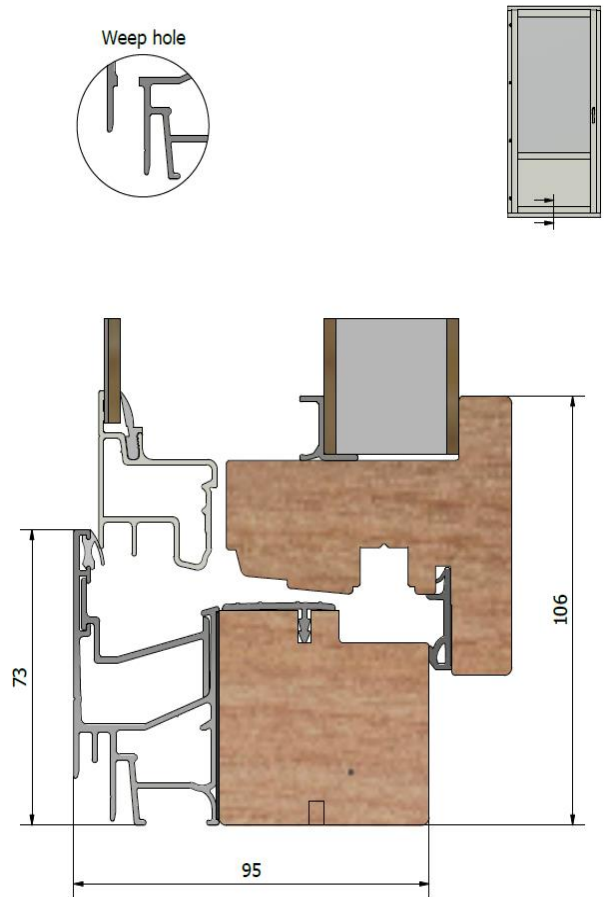


With insulated panel



Fully glazed

With sash transom



Frame depth (mm)	95
Sound reduction R_w (dB)	40 - 50
U-value (W/m^2K)	0,9 - 1,1
Surface finish	Optional RAL or NCS
Weepholes	Hidden or Visible
Opening	Inward
Hinges	Bolt-hinges